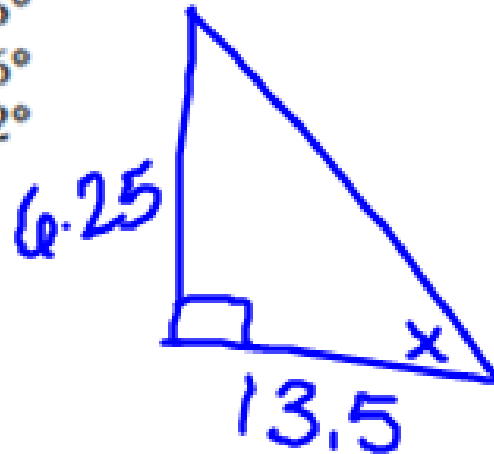


A man is 6 feet 3 inches tall. The tip of his shadow touches a fire hydrant that is 13 feet 6 inches away. What is the angle of elevation from the base of the fire hydrant to the top of the man's head? Round to the nearest tenth of a degree.

- A 24.8°
- B 34.5°
- C 42.6°
- D 65.2°



$$\tan x = \frac{6.25}{13.5}$$

$$\angle x = 24.8^\circ$$