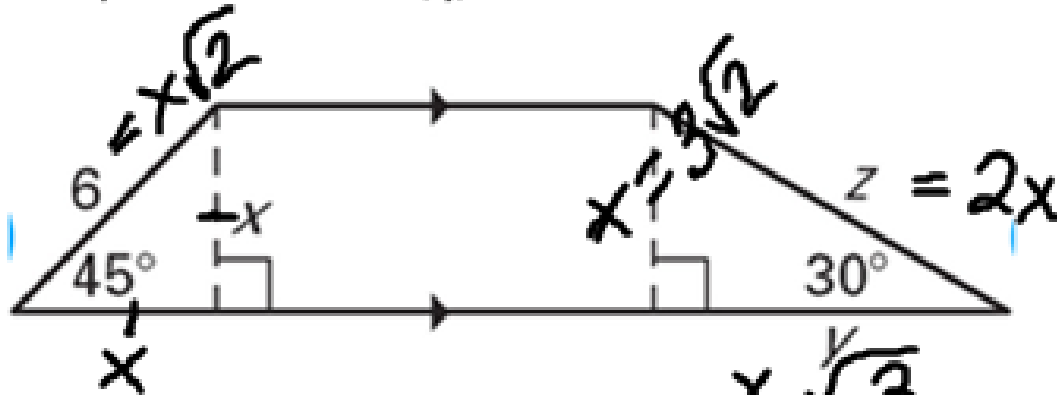


You try: Find the values of  $x$ ,  $y$ , and  $z$ .



$$z = 2(3\sqrt{2}) \\ = 6\sqrt{2}$$

$$y = 3\sqrt{4}$$

$$\frac{6}{\sqrt{2}} = \frac{x\sqrt{2}}{\sqrt{2}}$$
$$\frac{\sqrt{2} \cdot 6}{\sqrt{2} \cdot \sqrt{2}} = x$$

$$\frac{3 \cdot 6\sqrt{2}}{2}$$
$$x = 3\sqrt{2}$$