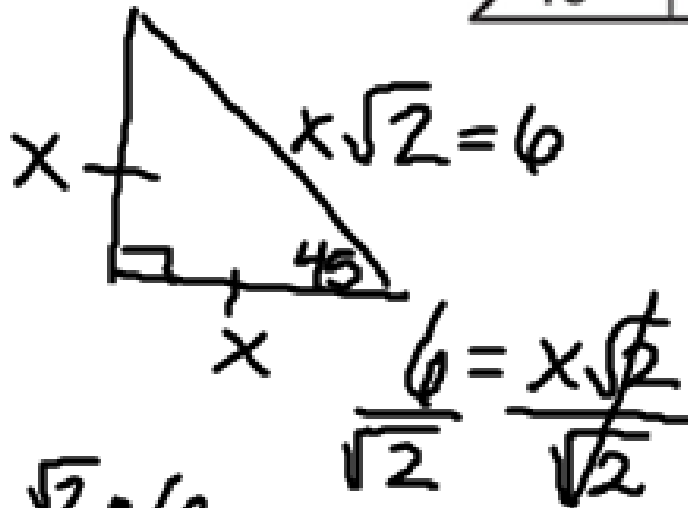
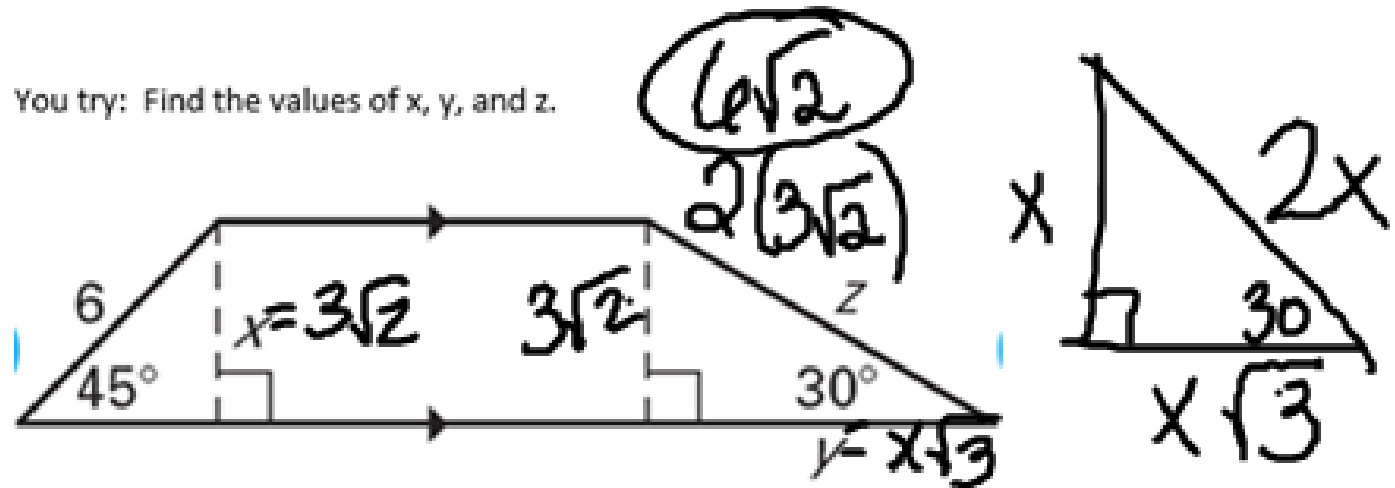


You try: Find the values of x, y, and z.



$$\frac{\sqrt{2} \cdot 6}{\sqrt{2} \cdot \sqrt{2}} = x$$

$$x = \frac{3\sqrt{2}}{\cancel{\sqrt{2}}}$$

$$x = 3\sqrt{2}$$

$$y = x\sqrt{3}$$

$$= 3\sqrt{2}\sqrt{3}$$

$$3\sqrt{6} \text{ circled}$$